

Coaxial Attenuator/Switch

ZFAS-2000

50Ω Bi-Phase 100 to 2000 MHz



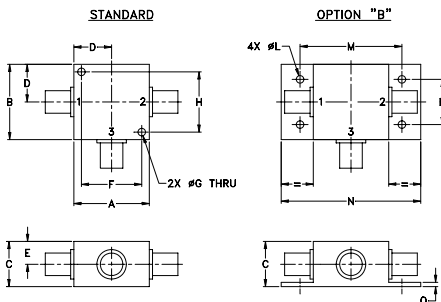
Maximum Ratings

Operating Temperature	-55°C to 100°C
Storage Temperature	-55°C to 100°C
Control Current	30mA

Coaxial Connections

INPUT	2
OUTPUT	1
CONTROL	3

Outline Drawing



Outline Dimensions (inch)

A	B	C	D	E	F	G	H
1.25	1.25	.75	.63	.38	1.00	.125	1.000
31.75	31.75	19.05	16.00	9.65	25.40	3.18	25.40
J	K	L	M	N	P	Q	wt
--	--	.125	1.688	2.18	.75	.07	grams
--	--	3.18	42.88	55.37	19.05	1.78	70.0

Features

- wideband, 100 to 2000 MHz
- rugged shielded case

Applications

- bi-phase modulator

CASE STYLE: K18

Connectors	Model	Price	Qty.
SMA	ZFAS-2000	\$64.95	(1-9)
BRACKET (OPTION "B")		\$2.50	(1+)

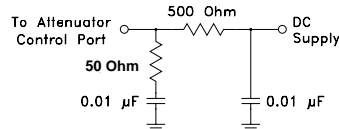
Attenuator/Switch Electrical Specifications

FREQUENCY (MHz)	INSERTION LOSS (dB) ±20 mA	MAX. INPUT PWR (dBm) ±20mA	IN-OUT ISOLATION (dB) 0 mA						BI-PHASE X̄ (±20 mA) Typ.												
			Mid-Band m		Total Range		L		M		U		Δ AMP (dB)		Phase (deg.) deviation from 180°						
IN f _L -f _U	CON	1 dB compr.	no damage	Typ.	Max.	Typ.	Max.	Typ.	Min.	Typ.	Min.	Typ.	Min.	Typ.	Min.	Typ.	Min.	Typ.	Min.		
100-2000	DC-0.5	19*	25	4.2	6.5	5.4	7.5	30	22	--	--	26	20	0.3	0.4	5.0	8.0				

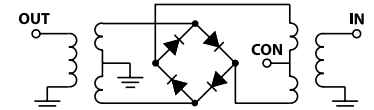
L = low range [f_L to 10 f_L] M = mid range [10 f_L to f_U/2] U = upper range [f_U/2 to f_U] m = [2 f_L to f_U/2]
 * 15 dBm from 100-800 MHz.

Performance specifications apply for input power up to 10 dB below stated 1 dB compression.

suggested control port biasing configuration

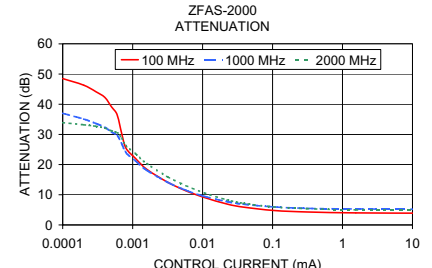
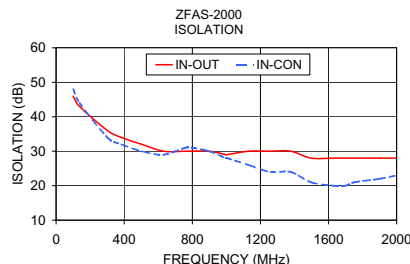
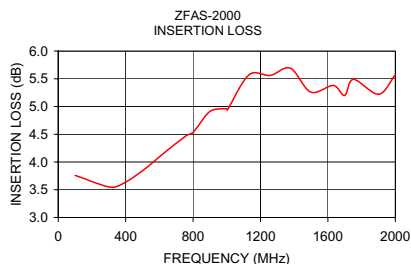


electrical schematic



Typical Performance Data

Freq. (MHz)	I. Loss (dB) at 20mA	±Control Δ AMP (dB)	20mA Δ Phase (deg.)	Isolation (dB) (in-out)			Input R. Loss (dB)	Control Current (mA)	Attenuation (dB)			Phase Δ ref at 15mA Ctrl			Input VSWR		
				X̄	σ	X̄			X̄	X̄	X̄	100 MHz	1000 MHz	2000 MHz	100 MHz	1000 MHz	2000 MHz
100.0	3.76	0.006	0.02	179.4	46	48	9.5	0.0000	51.0	38.9	34.4	89.6	18.6	46.6	1.6	4.7	2.9
137.1	3.72	0.003	0.01	179.0	43	44	10.2	0.0001	48.5	37.0	33.9	91.3	12.9	42.2	1.6	4.7	2.9
301.5	3.55	0.001	0.03	178.2	36	34	11.0	0.0002	46.3	35.1	33.2	89.8	8.7	35.1	1.6	4.6	2.9
383.8	3.61	0.001	0.04	177.7	34	32	10.5	0.0003	44.1	33.6	32.7	85.5	5.8	31.0	1.5	4.6	2.9
503.4	3.85	0.010	0.08	177.1	32	30	9.3	0.0004	42.3	32.4	32.1	84.8	2.4	27.0	1.5	4.6	2.9
630.4	4.17	0.027	0.18	176.4	30	29	7.9	0.0005	39.1	30.8	31.2	78.5	-1.4	21.2	1.5	4.6	2.9
757.5	4.47	0.059	0.21	176.3	30	31	6.9	0.0006	36.5	29.7	30.6	71.5	-4.8	16.8	1.5	4.5	2.9
802.4	4.54	0.061	0.22	176.4	30	31	6.7	0.0007	30.2	26.8	28.7	53.5	-12.0	6.9	1.5	4.4	2.8
899.5	4.91	0.107	0.27	176.1	30	30	6.3	0.0008	25.5	24.0	26.3	43.0	-15.6	-0.9	1.4	4.2	2.7
996.7	4.96	0.114	0.28	175.9	29	28	6.2	0.0011	22.0	21.2	23.6	36.6	-16.4	-5.9	1.4	4.0	2.6
1004.2	4.94	0.118	0.28	175.8	29	28	6.2	0.0016	18.4	18.1	20.3	31.0	-16.0	-8.8	1.3	3.7	2.4
1131.3	5.57	0.162	0.36	175.7	30	26	6.4	0.0032	14.1	14.1	15.9	24.3	-13.7	-9.8	1.2	3.3	2.0
1258.3	5.56	0.105	0.36	175.5	30	24	7.0	0.0058	11.3	11.5	13.0	19.5	-11.1	-8.9	1.2	3.1	1.8
1377.9	5.69	0.045	0.37	175.5	30	24	7.7	0.0106	9.1	9.5	10.6	14.8	-8.6	-7.5	1.3	3.0	1.6
1497.5	5.26	0.053	0.33	175.2	28	21	8.7	0.0226	6.9	7.7	8.3	9.5	-5.5	-5.4	1.5	2.9	1.4
1632.1	5.38	0.045	0.27	174.7	28	20	10.0	0.0381	5.9	6.9	7.2	6.7	-4.0	-4.0	1.6	2.9	1.4
1699.4	5.20	0.068	0.29	174.2	28	20	10.8	0.1031	4.8	6.0	6.0	3.2	-2.0	-2.1	1.8	3.0	1.5
1751.7	5.49	0.068	0.27	174.2	28	21	11.3	0.3098	4.3	5.5	5.4	1.3	-0.9	-1.0	1.9	3.0	1.6
1901.2	5.22	0.090	0.23	173.0	28	22	12.4	1.5487	4.0	5.3	5.0	0.4	-0.4	-0.4	2.0	3.0	1.7
2000.0	5.57	0.156	0.25	172.7	28	23	12.5	15.1120	3.9	5.2	4.9	0.1	-0.1	0.0	2.0	3.1	1.7



Mini-Circuits®
ISO 9001 ISO 14001 CERTIFIED

ALL NEW
minicircuits.com

P.O. Box 350166, Brooklyn, New York 11235-0003 (718) 934-4500 Fax (718) 332-4661 For detailed performance specs & shopping online see Mini-Circuits web site



The Design Engineers Search Engine Provides ACTUAL Data Instantly From MINI-CIRCUITS At: www.minicircuits.com

RF/IF MICROWAVE COMPONENTS

REV. OR
M96904
ZFAS-2000
WP/TD/CP
080310